

## UPPER SUPPLY CABINET

- STAINLESS STEEL

- WALL MOUNT

**Model #: CAB-XXXX-SS-U**

### APPLICATION:

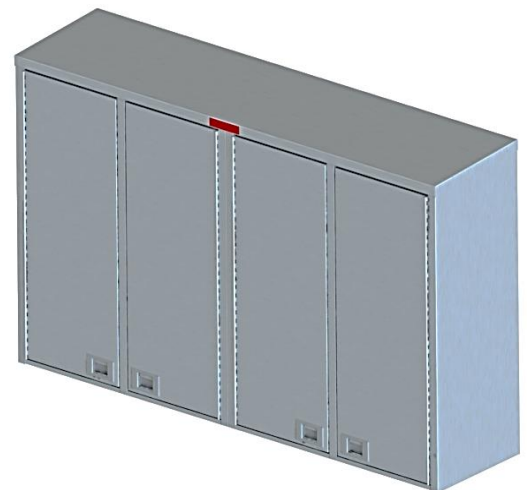
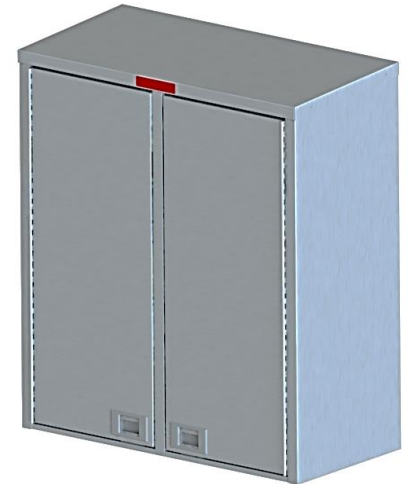
-Healthcare surgical storage  
of miscellaneous items

### SPECIFICATIONS:

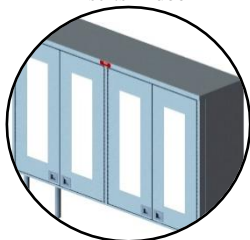
- Stainless steel type #304 or #316 finish
- Wall mounted profile
- Cabinetry available as one single unit with two compartments and doors
- Available in various door configurations; single, double, triple door, etc
- Cabinetry storage dimensions are customizable
- Front cabinetry doors are available all stainless steel or with Lexan, plexi, or tempered glass inserts
- Multiple door closure hardware choices; extended handle, s/s pull handle, paddle latch closure, lockable closures, etc
- Doors are equipped with stainless steel continuous piano hinges or lift-off style hinge assemblies
- Each cabinet compartment includes one stainless steel shelf, adjustable on 1" pilaster strips
- Top of cabinet has standard flat profile
- Stainless steel, heavy duty wall mounting brackets included

### OPTIONAL FEATURES [1]:

- NP - Stainless steel nameplate
- TL - 4 tubular legs equipped with adjustable mounting feet for additional cabinetry support (to lower cabinetry)
- AS - Additional adjustable shelves
- Sloped top area for ease of cleaning



Optional Lexan, plexi or glass inserts in door



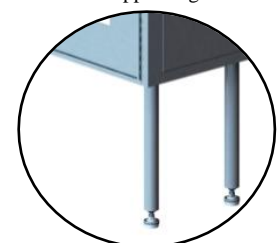
Upper cabinetry stackable over lower cabinetry



Upper cabinetry mounted to wall over lower cabinetry



Optional upper cabinet support legs



*Floor model cabinets also available ~ Contact Factory for custom design and pricing*

© Copyright 2020 Hatch Industries Limited

CANADA/USA TOLL FREE: 1-800-387-6969 FAX: 1-519-822-8365 [www.hatchindustries.com](http://www.hatchindustries.com)

211 Dawson Road, Guelph, Ontario, Canada N1H 1A3  
Specifications subject to change without notice.

Custom Designs  
Available